



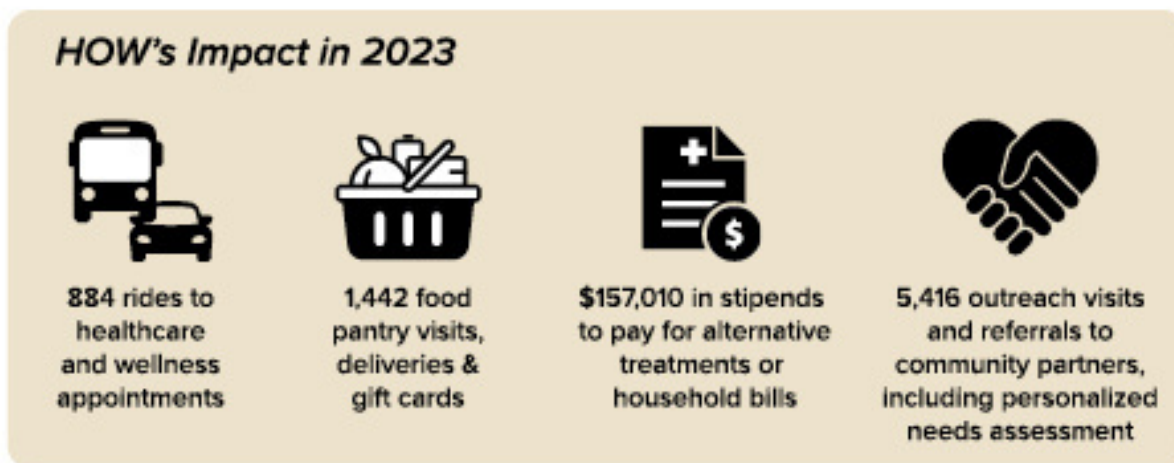
## ***Business Philanthropy Transforms Our Community***

**Helping Our Women is the trusted resource center for women living with chronic or serious health conditions in the rural Outer Cape towns of Eastham, Wellfleet, Truro and Provincetown.**

Through personalized outreach we EDUCATE, SUPPORT, and EMPOWER our client members to take control of their healthcare, well-being, and diverse needs by connecting them to our services, government benefits, community partners, and health and wellness education. Our staff and volunteers work to:

- Improve access to healthcare, social services, and connections to benefit programs
- Create more manageable lifestyles by easing the stress of everyday life
- Inspire and educate women to take control of their healthcare, well-being, and diverse needs

We've seen a 61% increase in the number of women and households we serve in the rural towns of the Outer Cape over the past 5 years. Evidence shows, living in a rural community with limited services can increase the likelihood of women experiencing a number of chronic health issues. Partnerships with local businesses are key to our ability to offer resources. They help us provide support services so these women can focus on wellness and well-being, easing the stresses of everyday life.



Aligning with HOW provides your business a meaningful way to support the community and lets your customers and the community know you are committed to helping neighbors in need. It shows you recognize the value of being connected with a respected and responsive growing organization. We understand that each company is different and will work with you to develop a customized sponsorship package to meet your company's unique marketing and philanthropic goals.

**Let's create a partnership that works!**

**[Click to read about our Women Thriving Capital Campaign](#)**

## **Basic Needs Sponsorships**

### **Food and Personal Products Pantry Sponsor: \$5,000**

Helps to keep the pantry continuously stocked with food and personal products

- A sign acknowledging this sponsorship will be included in both centers and your logo will be on our re-usable pantry bags.

### **Transportation Sponsor: \$5,000**

Helps provide rides to medical appointments whether on the Cape or in Boston and for other health related needs. This sponsorship translates into 450+ rides to medical appointments for HOW clients.

- A sign acknowledging this sponsorship will be included in both centers and your logo will be featured on our re-usable pantry bags.

Basic Needs Sponsors will be acknowledged on HOW's website, business logo featured in monthly e-newsletters, a dedicated sponsor feature in a HOW e-newsletter as well as social media acknowledgement post with business logo and tags/hyperlinks and listed in HOW's Annual Report.

***“Roderick’s Payroll & Bookkeeping is a long-time partner with Helping Our Women by supporting their vital work. Plain and simple, it’s just good business to give back to the community that supports you. In the Outer Cape, we are all in this together.”***

***- Steven Roderick, local business owner***

## **Program Sponsorships**

### **Peer Wellness Coaching Program Sponsor: \$5,000**

A new and exciting initiative for HOW! Train volunteers to support clients' healthcare journeys utilizing best practices from coaching, peer support, and health worker professions.

- Opportunity for 3 business sponsor employees to participate in peer wellness program training
- Verbal sponsor acknowledgement by HOW staff at training kick-off session & opportunity for sponsor representative to address trainee participants with 2 min. remarks
- Sponsor acknowledgement in program support materials and e-communications to participants
- A dedicated sponsor feature in a HOW e-newsletter as well as social media acknowledgement post with business logo and tags/hyperlinks

### **Peer Support Group Sponsor: \$2,500**

A popular and growing program featuring weekly facilitated support group discussion. An opportunity for education and offers the preventative health benefits of connecting in community to manage normal life challenges, health care diagnosis, ongoing health challenges and grief.

- Sponsor acknowledgement in program support materials and e-communications to participants
- Verbal sponsor acknowledgement by group facilitator at start of each group session
- Company acknowledged on HOW's website, business logo featured in monthly e-newsletter and listed in HOW's Annual Report

*cont.*

## **Community Sponsorships**

An annual, entry sponsorship for smaller business budgets - vital in supporting HOW's mission! Every bit counts in supporting efficient and effective day to day operations.

**Partner: \$500**

**Supporter: \$250**

- Community sponsors will be included on HOW's website, listed in HOW's monthly e-newsletters and listed on HOW's Annual Report.

*If a cash donation is not in your budget for 2024, your business can still support HOW's operational fundraising efforts through a Gift-In-Kind donation to our annual online/live auction. Contact us with ideas on what you'd like to donate for bidding - experiences are welcome too!*

---

## **Event Sponsorships**

### **Women's Winter Conversation Café**

Open to all women living on the Outer Cape, a regularly scheduled program that features facilitated activity and conversation to build connection and combat the negative health consequences of social isolation that many experience throughout the winter months in our region. Coffee, tea and snacks are always offered.

***Latina's Conversation Café program will also be hosted in collaboration with Outer Cape Health Solutions!***

**Convening Sponsor: \$850**

- Company promotion (name listing and logo with hyperlinks and social media tags) on HOW's website and all advertisement related to the program (social media, email invites and printed advertising); company spokesperson can make 2 min. welcome remarks or include a written message to participants

### **Provincetown Pilgrim Trot 5K (November)**

This festive run down iconic Commercial Street is a great way to kick-off Thanksgiving Day! In 2023, 250 runners joined in the fun and the event is growing each year.

**Presenting Monument Sponsor: \$3,000 (1 available)**

- 6 runner entries; company logo in primary position on the event t-shirt; promotion on HOW's website and all advertisement related to the event; company representative kicks off the race.

**Turkey Sponsor: \$1,500 (2 available)**

- 4 runner entries; company logo in secondary position on the event t-shirt; promotion on HOW's website and all advertisement related to the event.

**Harvest Sponsor: \$750 (3 available)**

2 runner entries; company logo on the event t-shirt; promotion on HOW's website and all advertisement related to the event.

*cont.*

## **Event Sponsorships - cont.**

### **Ann Maguire Women's Wellness Center Grand Opening Community Party**

A festive celebration of the long-awaited, grand opening of the new Ann Maguire Women's Wellness Center to the public. Details of this springtime event are in the works. We invite sponsors to help provide input on planning and activities. This is a low-entry \$ event - sponsorships are vital so that all can attend our joyous and fun community event!

#### **Nauset Light- Presenting Sponsor: \$5,000 (1 available)**

- HOW's "Name of Event" presented by Sponsor Company logo on all promotional materials and communications including social media, email invitations, print and media advertising, primary logo position on Grand Opening signage featured in prime location on Route 6, sponsor representative to participate in public welcome at event with 2 minute remarks, opportunity to provide sponsor branded event giveaway swag items, premier placement of business marketing table at event

#### **First Encounter Sponsor: \$2,500 (2 available)**

- Company Name listing with logo on all promotional materials and communications including social media, email invitations, print and media advertising, opportunity for a business marketing table at event, acknowledgement of business during welcome remarks

#### **Coast Guard Sponsor: \$1,000 (3 available)**

- Company Name listing with logo on all promotional materials and communications including social media, email invitations, print and media advertising, acknowledgement of business during welcome remarks

#### **Kingsbury Sponsor: \$500**

- Company Name listing on all promotional materials and communications including social media, email invitations, print and media advertising, acknowledgement of business during welcome remarks

Contact Gwynne Guzzeau to discuss 2024 sponsorship opportunities.

(508) 487-4357

[gwynne@helpingourwomen.org](mailto:gwynne@helpingourwomen.org)

### **Host a Fundraiser or Friendraiser for Helping Our Women**

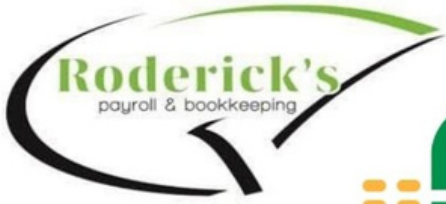
We're please to present a newly formalized third party event program in 2024! Have an idea that will help HOW meet new supporters in the community and raise vital funds for our services?

Bring us the concept or even the intial idea and goals, and we'll help to support with promotion and HOW informational assets including representative volunteers who can help communicate our mission to your audience. *(Fundraising minimum of \$2,500 for full package of promotional support)*. Events can include shopping or dining night with portion of sales proceeds to HOW, ticketed event at your venue, performances, Friday Denim Day at Work, etc. Let's work together to brainstorm and raise vital funds for our community!



# THANKS TO OUR GENEROUS 2023 BUSINESS SPONSORS

CAPE  
COD 5



SEAMEN'S BANK



THE BARNSTABLE  
SINCE 1833



AIM Thrift Shop



PROPERTY MANAGEMENT | SERVICES | PAINTING



b\well

Provincetown  
United Methodist Church  
Thrift Shop

La Tanzi  
Spaulding  
& Landreth  
— Est. 1969 —